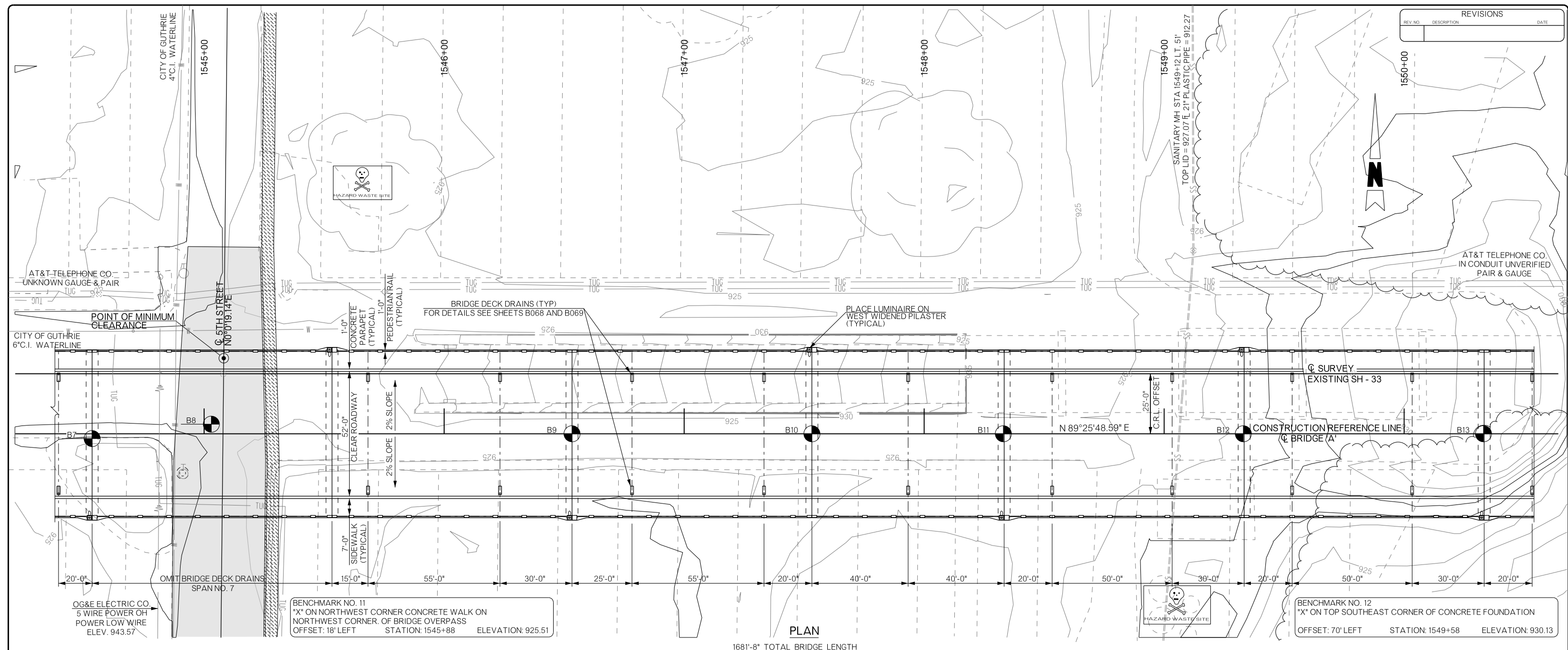
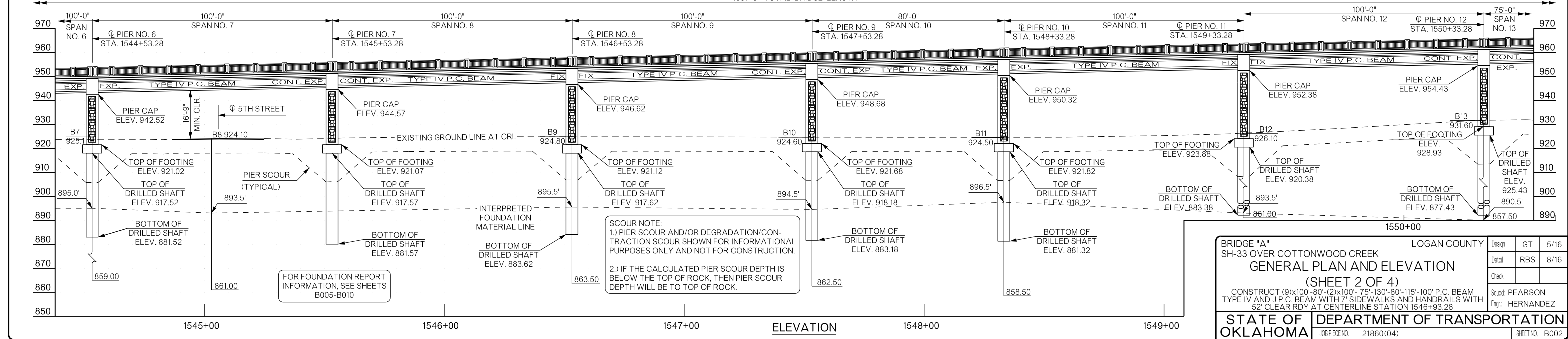


REVISIONS		
REV. NO.	DESCRIPTION	DATE



BENCHMARK NO. 11
 "X" ON NORTHWEST CORNER CONCRETE WALK ON
 NORTHWEST CORNER OF BRIDGE OVERPASS
 OFFSET: 18' LEFT STATION: 1545+88 ELEVATION: 925.51

BENCHMARK NO. 12
 "X" ON TOP SOUTHEAST CORNER OF CONCRETE FOUNDATION
 OFFSET: 70' LEFT STATION: 1549+58 ELEVATION: 930.13



BRIDGE "A" SH-33 OVER COTTONWOOD CREEK		LOGAN COUNTY	Design	GT	5/16
GENERAL PLAN AND ELEVATION			Detail	RBS	8/16
(SHEET 2 OF 4)			Check		
CONSTRUCT (9)x100'-80'-(2)x100'-75'-130'-80'-115'-100' P.C. BEAM TYPE IV AND J.P.C. BEAM WITH 7' SIDEWALKS AND HANDRAILS WITH 52' CLEAR R.O.Y. AT CENTERLINE STATION 1546+93.28			Squad	PEARSON	
STATE OF OKLAHOMA		DEPARTMENT OF TRANSPORTATION	Engr:	HERNANDEZ	
JOB/PIECE NO. 21860(04)			SHEET NO. B002		